

# GULU GULU CAFE

56 CENTRAL SQUARE  
LYNN, MA 01901

| Revisions |      |             |
|-----------|------|-------------|
| No        | Date | Description |
|           |      |             |
|           |      |             |
|           |      |             |
|           |      |             |
|           |      |             |

**Jacob Higginbottom  
Architect**

316 Summer Street 4th fl  
Boston, MA 02210  
(617) 596-9465

PROJECT:

**Gulu Gulu Cafe**

CLIENT:

**STEVE FELDMANN**

SCALE:

**1/4" = 1'-0"**

DRAWN

BY: **JH**

DATE:

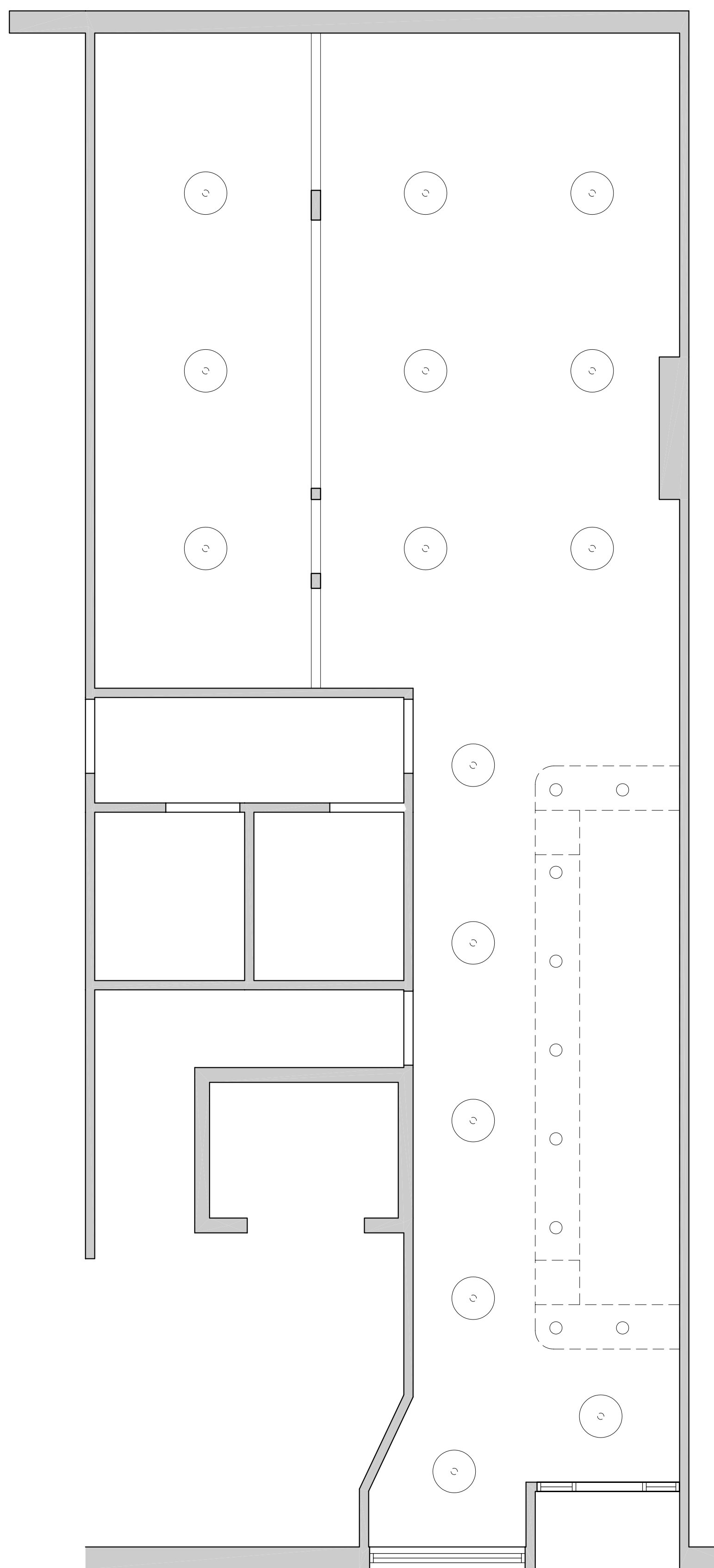
**13 December 2004**

DRAWING TITLE:

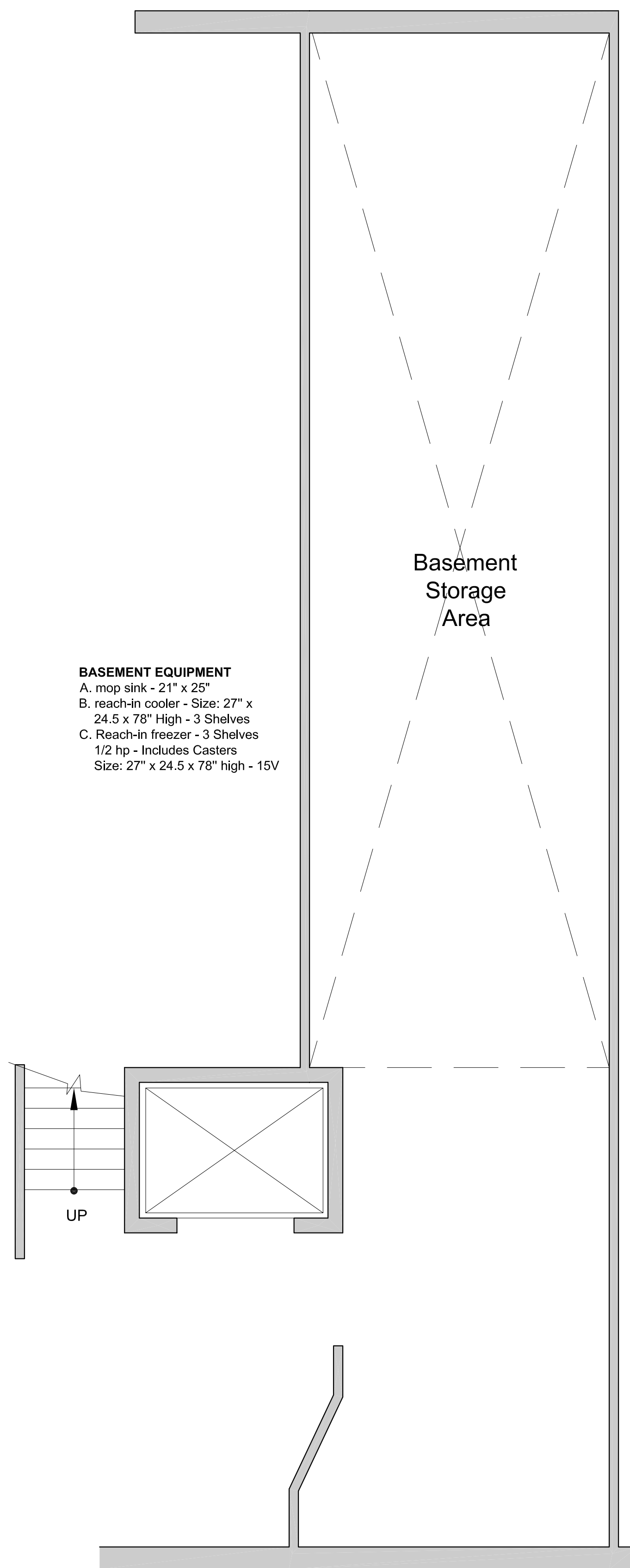
**CAFE PLANS**

DRAWING  
No.

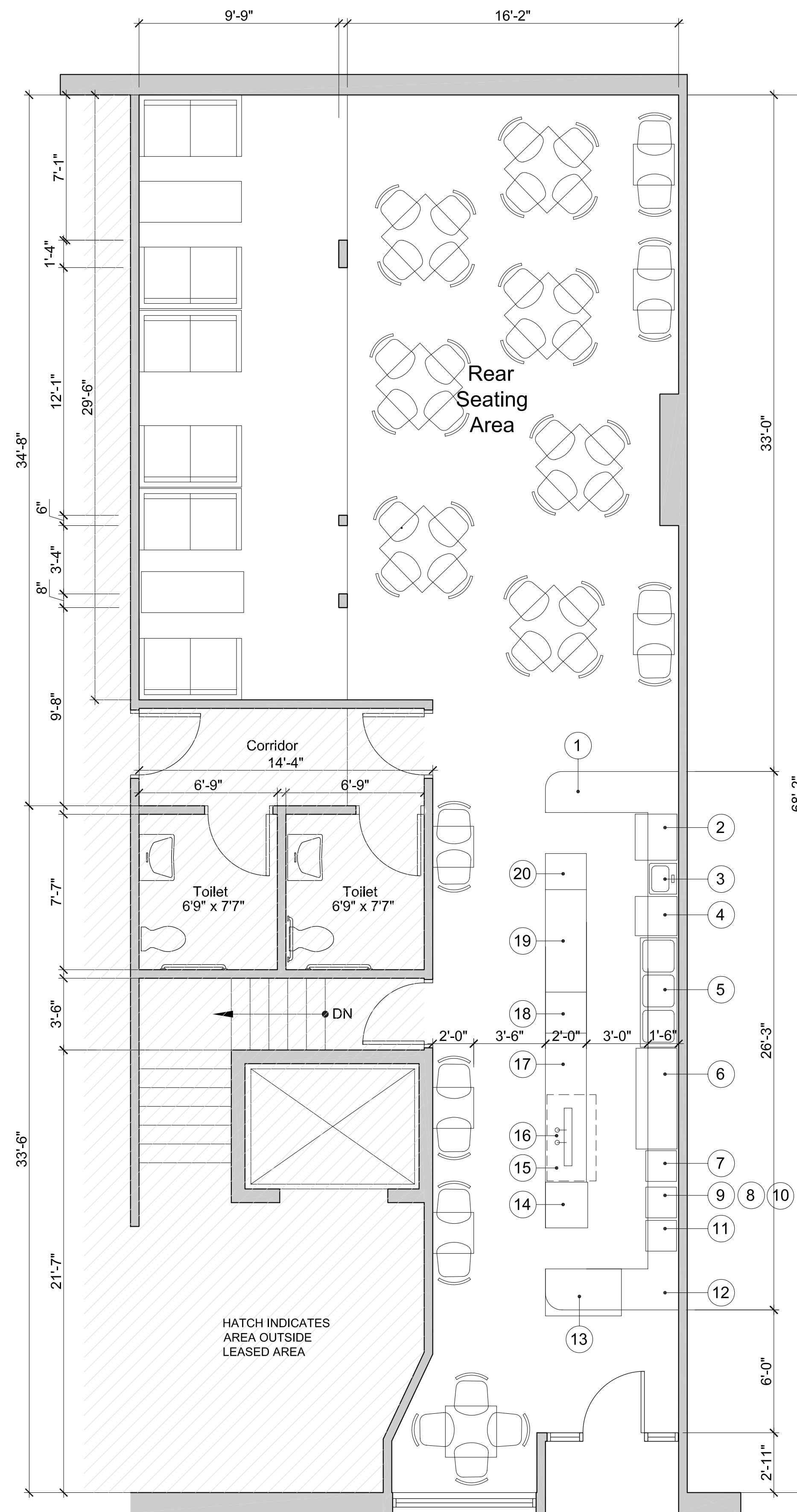
**A-1**



**3 Gulu Gulu Reflected Ceiling Plan**  
Scale 1/4" = 1'-0"



**2 Gulu Gulu Basement Floor Plan**  
Scale 1/4" = 1'-0"



**1 Gulu Gulu Cafe Floor Plan**  
Scale 1/4" = 1'-0"

**EQUIPMENT LIST**

- 1. Prep Table 72"x30"
- 2. Refrigerator - salads, desserts  
27" x 24.5 x 78" h - 3 Shelves
- 3. Hand sink 17" w x 15.5" D
- 4. Dishwasher 34.25Hx24.25Wx23D
- 5. 3 compartment sink 21.5 x 64"
- 6. Back Bar cooler 59" L
- 7. Coke machine
- 8. Red wine (shelved)
- 9. Cappuccino machine on countertop
- 10. Shelving for glasses/ cups
- 11. Cash register
- 12. Take out Ordering Station
- 13. Gelato station  
44.3"L x 27.2"D x 38"H.
- 14. Glass Chiller  
24-3/4 x 26-3/4 x 33-1/4
- 15. Beer taps
- 16. 2 Keg cooler 38.75Hx50.5Wx28.75D
- 17. Wine pouring station
- 18. Drink pickup - Waitstaff
- 19. Prep/ line refrigeration  
table 60"L 29.25"H
- 20. Food pickup - Waitstaff